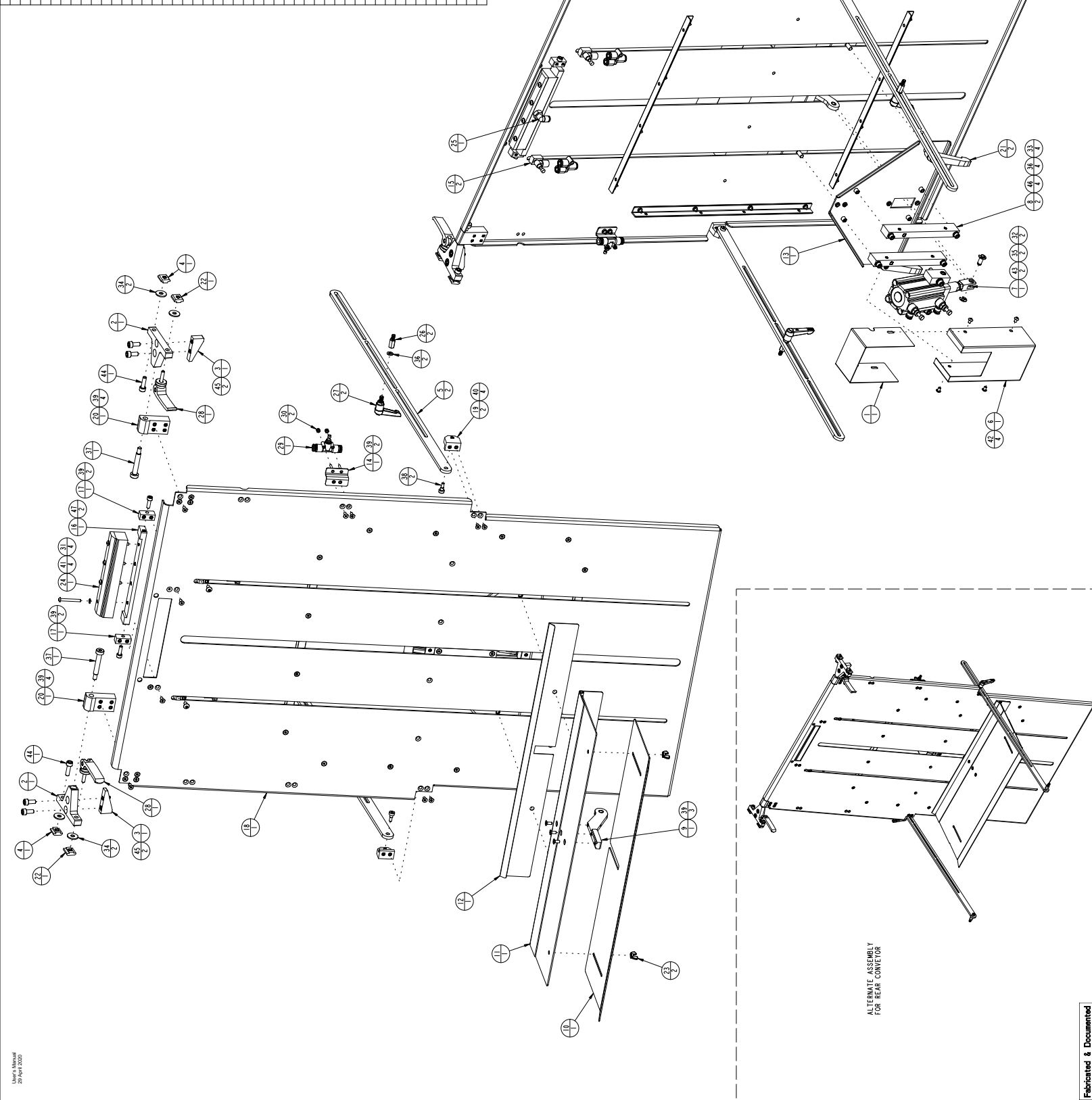


ITEM	QTY	PART NO.	DESCRIPTION
1	1	3-004423	GUARD, CYLINDER TOP
2	2	3-003318	BRACKET, MOUNT, VLS
3	2	3-003317	BRACKET, SUPPORT, VLS
4	2	3-003316	T-NUT, 3030 SERIES, M6X1.0, NON-CLAMPING
5	2	3-002742	LINK, LOWER PIVOT, F22V LOAD SHELF
6	1	3-002421	GUARD, CIL PLATE
7	1	3-002420	GUARD, CIL PLATE
8	2	3-002419	NOZZLE, CYLINDER LOAD SHELF, F22
9	1	3-002418	NOZZLE, CIL PLATE MOUNT
10	1	3-002417	BLOCK, SHELF PIVOT
11	1	3-002416	EXTENSION, FAB LOAD SHELF
12	1	3-002414	ASSY, DRIP SHELF, FAB LOAD SHELF
13	1	3-002413	HINGE DEFLECTOR, FAB LOAD SHELF
14	1	3-002401	PLATE, CYLINDER, FAB LOAD SHELF
15	2	3-002391	BRACKET, NEEDLE, VLS, F22V
16	2	3-002389	NOZZLE, FAB LOAD SHELF
17	2	3-002387	BRACKET, AIR KNIFE, LOAD SHELF, F22V
18	1	3-002386	PIVOT, AIR KNIFE, LOAD SHELF, F22V
19	2	3-002385	ASSY, PLATE, 36"
20	2	3-001807	BLOCK, PIVOT LOCK, FAB LOAD SHELF
21	2	3-001806	SHIRT BLOCK, VERTICAL PLATE, FAB LOAD SHELF
22	2	2-002710-M6	HANDLE, ADJ YELLOW PLASTIC 65mm LG X M6 INT STEEL THD
23	2	2-001895	T-NUT, 3030 SERIES, M6X1.0
24	2	2-001894	WASHER, FLAT, M6, SS
25	2	2-001893	WASHER, FLAT, M6, SS
26	1	2-001892	WASHER, FLAT, M6, SS
27	2	2-001890	WASHER, FLAT, M6, SS
28	2	2-001889	WASHER, FLAT, M6, SS
29	1	2-001888	WASHER, FLAT, M6, SS
30	2	2-001887	WASHER, FLAT, M6, SS
31	4	1-33155F	NUT, HEX, NYLON LOCK, M3X0.5, SS
32	2	1-23157F	WASHER, LOCK, INTERNAL TOOTH, M4, SS
33	4	1-22161F	WASHER, SPLIT LOCK, M6, SS
34	4	1-22159F	WASHER, SPLIT LOCK, M5, SS
35	2	1-21261F	WASHER, FLAT, FENDER, M6, SS
36	6	1-21161F	WASHER, FLAT, M6, SS
37	2	1-21159F	WASHER, FLAT, M6, SS
38	2	1-15108F-020M	SCREW, SHOULDER, 8MM DIA X 40MM LG, SS, ISO 1319
39	2	1-15105F-003M	SCREW, SHOULDER, 5MM DIA X 5MM LG, SS, ISO 1319
40	2	1-15105F-003M	SCREW, SHOULDER, 5MM DIA X 5MM LG, SS, ISO 1319
41	4	1-15537F-035M	SCREW, FLAT HEAD, SOCKET, M4X0.7 X 6MM LG, SS
42	4	1-14537F-035M	SCREW, FLAT HEAD, SOCKET, M4X0.7 X 6MM LG, SS
43	2	1-14537F-035M	SCREW, FLAT HEAD, SOCKET, M4X0.7 X 6MM LG, SS
44	2	1-11816F-035M	SCREW, CAP, SOCKET HEAD, M6X1.0 X 55MM LG, SS
45	4	1-11816F-04M	SCREW, CAP, SOCKET HEAD, M6X1.0 X 20MM LG, SS
46	4	1-11816F-02M	SCREW, CAP, SOCKET HEAD, M5X0.8 X 22MM LG, SS
47	2	1-11159F-016M	SCREW, CAP, SOCKET HEAD, M5X0.8 X 16MM LG, SS



3-004969-30
30" LOAD SHELF

REV	BY	DATE	CHK	REMARKS
1	AW	10-10-10	TS	REWORK

ITEM	QTY	DESCRIPTION
1	1	GUARD, CYLINDER TOP
2	2	BRACKET, MOUNT, VLS
3	2	BRACKET, SUPPORT, VLS
4	2	T-NUT, 3030 SERIES, M6X1.0, NON-CLAMPING
5	2	LINK, LOWER PIVOT, F22V LOAD SHELF
6	1	GUARD, CIL PLATE
7	1	GUARD, CIL PLATE
8	2	NOZZLE, CYLINDER LOAD SHELF, F22
9	1	NOZZLE, CIL PLATE MOUNT
10	1	BLOCK, SHELF PIVOT
11	1	EXTENSION, FAB LOAD SHELF
12	1	ASSY, DRIP SHELF, FAB LOAD SHELF
13	1	HINGE DEFLECTOR, FAB LOAD SHELF
14	1	PLATE, CYLINDER, FAB LOAD SHELF
15	2	BRACKET, NEEDLE, VLS, F22V
16	2	NOZZLE, FAB LOAD SHELF
17	2	BRACKET, AIR KNIFE, LOAD SHELF, F22V
18	1	PIVOT, AIR KNIFE, LOAD SHELF, F22V
19	2	ASSY, PLATE, 36"
20	2	BLOCK, PIVOT LOCK, FAB LOAD SHELF
21	2	SHIRT BLOCK, VERTICAL PLATE, FAB LOAD SHELF
22	2	HANDLE, ADJ YELLOW PLASTIC 65mm LG X M6 INT STEEL THD
23	2	T-NUT, 3030 SERIES, M6X1.0
24	2	WASHER, FLAT, M6, SS
25	2	WASHER, FLAT, M6, SS
26	1	WASHER, FLAT, M6, SS
27	2	WASHER, FLAT, M6, SS
28	2	WASHER, FLAT, M6, SS
29	1	WASHER, FLAT, M6, SS
30	2	WASHER, FLAT, M6, SS
31	4	NUT, HEX, NYLON LOCK, M3X0.5, SS
32	2	WASHER, LOCK, INTERNAL TOOTH, M4, SS
33	4	WASHER, SPLIT LOCK, M6, SS
34	4	WASHER, SPLIT LOCK, M5, SS
35	2	WASHER, FLAT, FENDER, M6, SS
36	6	WASHER, FLAT, M6, SS
37	2	WASHER, FLAT, M6, SS
38	2	SCREW, SHOULDER, 8MM DIA X 40MM LG, SS, ISO 1319
39	2	SCREW, SHOULDER, 5MM DIA X 5MM LG, SS, ISO 1319
40	2	SCREW, SHOULDER, 5MM DIA X 5MM LG, SS, ISO 1319
41	4	SCREW, FLAT HEAD, SOCKET, M4X0.7 X 6MM LG, SS
42	4	SCREW, FLAT HEAD, SOCKET, M4X0.7 X 6MM LG, SS
43	2	SCREW, FLAT HEAD, SOCKET, M4X0.7 X 6MM LG, SS
44	2	SCREW, CAP, SOCKET HEAD, M6X1.0 X 55MM LG, SS
45	4	SCREW, CAP, SOCKET HEAD, M6X1.0 X 20MM LG, SS
46	4	SCREW, CAP, SOCKET HEAD, M5X0.8 X 22MM LG, SS
47	2	SCREW, CAP, SOCKET HEAD, M5X0.8 X 16MM LG, SS

Automated
PACKAGING SYSTEM
100% AUTOMATIC
100% EFFICIENT
100% RELIABLE
100% SAFE
100% SECURE
100% STABLE
100% STRONG
100% TIGHT
100% TRUE
100% VERTICAL
100% WIDE
100% YIELD

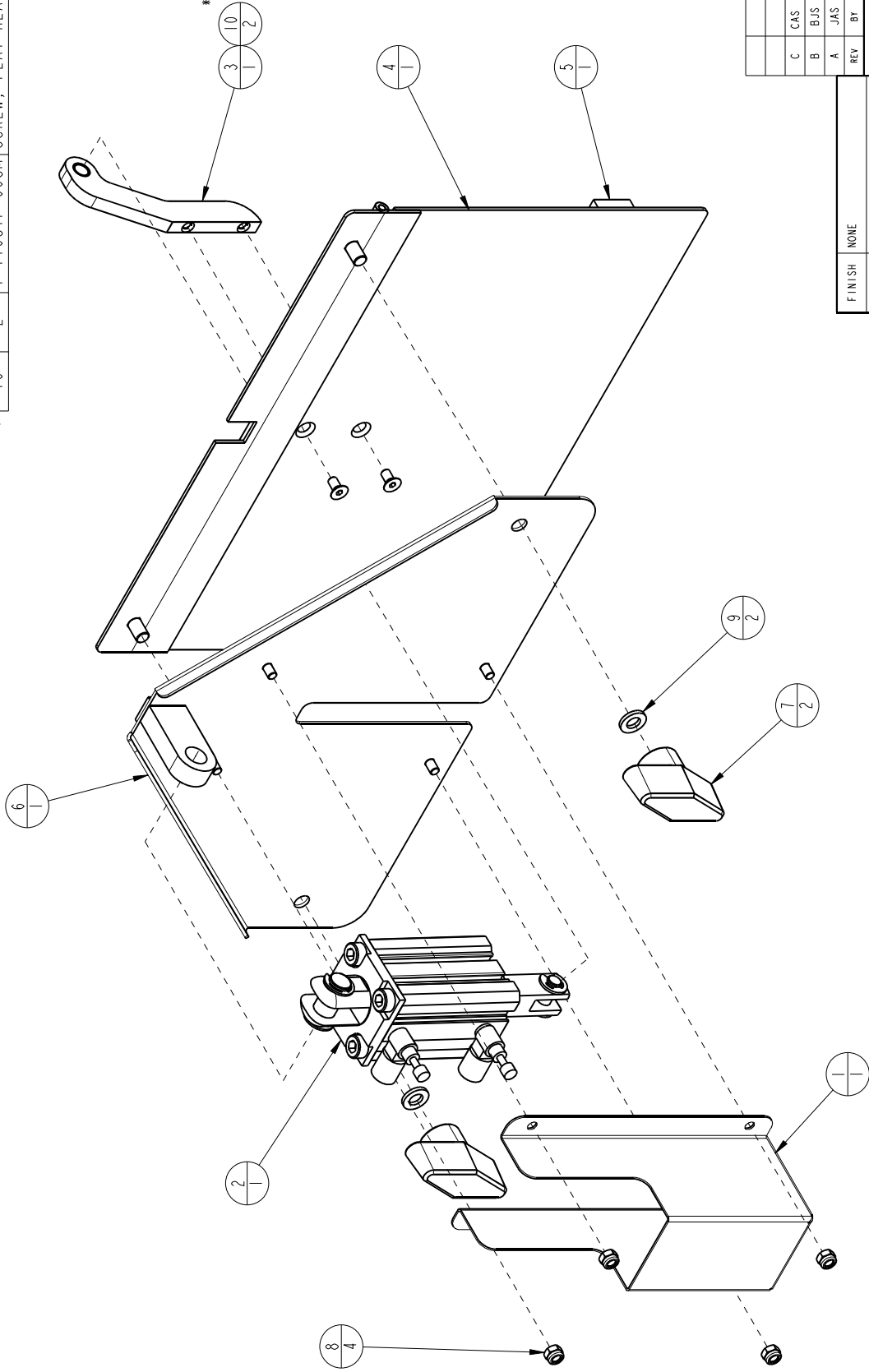
3-004969-30
30" LOAD SHELF

Fabricated & Documented
to be RoHS Compliant

ITEMS NOT SHOWN		
QTY	PART NO.	DESCRIPTION
1	200398A4	VALVE, SOLENOID, DOUBLE 3-WAY BLOCKED CENTER, 24VDC

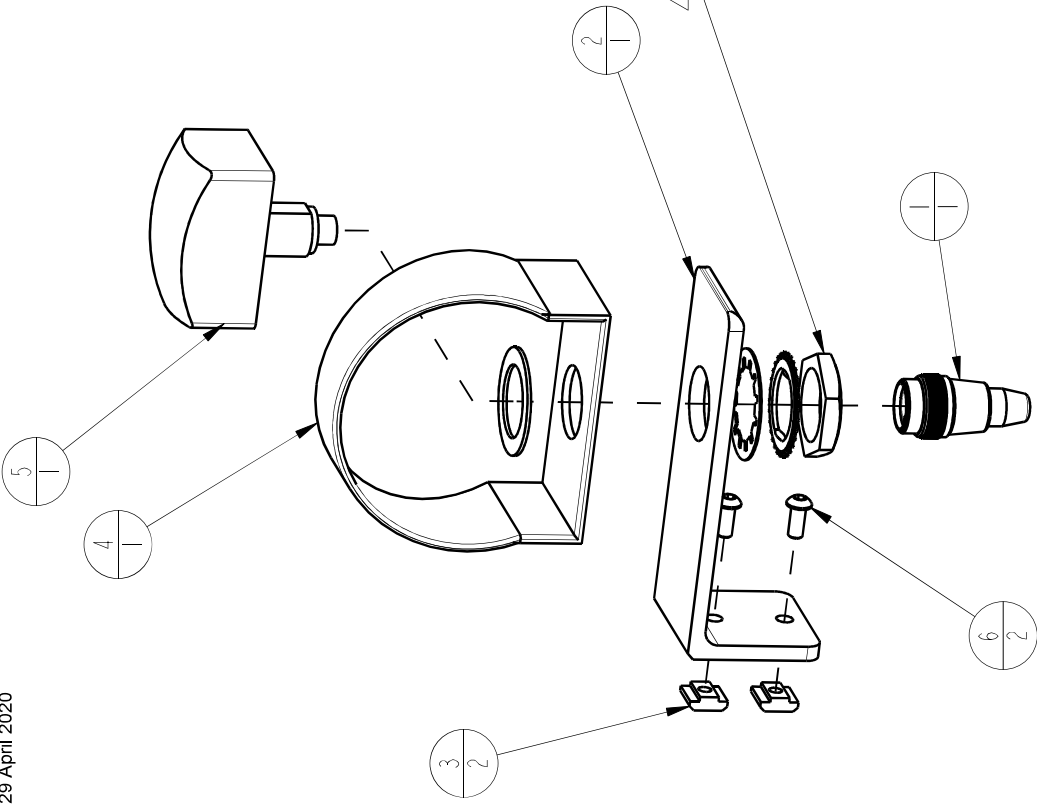
ITEM	QTY	PART NO.	DESCRIPTION
1	1	3-002430	GUARD, KICKER CYLINDER
2	1	3-002427	CYLINDER, KICKER
3	1	3-002426	LINK, KICKER
4	1	3-002425	WELDMENT, KICKER
5	1	3-002423	FOAM, DAMPING, KICKER
6	1	3-002422	PLATE, CYLINDER, KICKER
7	2	2-001932	T-HANDLE, THERMOPLASTIC, M6 FEMALE
8	4	1-33157F	NUT, HEX, NYLON LOCK, M4X0.7, SS
9	2	1-21161F	WASHER, FLAT, M6, SS
10	2	1-11657F-008M	SCREW, FLAT HEAD, SOCKET, M4X0.7 X 8MM LG, SS

ADD LOCTITE 222
ON FASTENERS
AS MARKED WITH *



REV	BY	DATE	ECN	DESCRIPTION
C	CAS	1-18-18	1329	ADD LOCTITE NOTE
B	BJS	7-30-15	157	ADDED 200398A4 TO ITEMS NOT SHOWN
A	JAS	3-18-15	9508	NEW DRAWING

FINISH	NONE
MATERIAL	SEE BOM
MACHINE SURFACES TO BE NO GREATER THAN 125 13.21 ✓ UNLESS OTHERWISE SPECIFIED PART MUST BE FREE OF BURRS AND SHARP EDGES	
TOLERANCE	
DIMENSIONS	
1 PLACE DIMS	
2 PLACE DIMS	
3 PLACE DIMS	
ANGLES	
INCHES	
MILLIMETERS	
1/16 ± .015	
1/8 ± .010	
3/16 ± .009	
1/2 ± .012	
3/4 ± .015	
1 ± .020	
1 1/2 ± .025	
2 ± .030	
3 ± .035	
4 ± .040	
5 ± .045	
6 ± .050	
7 ± .055	
8 ± .060	
9 ± .065	
10 ± .070	
11 ± .075	
12 ± .080	
13 ± .085	
14 ± .090	
15 ± .095	
16 ± .100	
17 ± .105	
18 ± .110	
19 ± .115	
20 ± .120	
21 ± .125	
22 ± .130	
23 ± .135	
24 ± .140	
25 ± .145	
26 ± .150	
27 ± .155	
28 ± .160	
29 ± .165	
30 ± .170	
31 ± .175	
32 ± .180	
33 ± .185	
34 ± .190	
35 ± .195	
36 ± .200	
37 ± .205	
38 ± .210	
39 ± .215	
40 ± .220	
41 ± .225	
42 ± .230	
43 ± .235	
44 ± .240	
45 ± .245	
46 ± .250	
47 ± .255	
48 ± .260	
49 ± .265	
50 ± .270	
51 ± .275	
52 ± .280	
53 ± .285	
54 ± .290	
55 ± .295	
56 ± .300	
57 ± .305	
58 ± .310	
59 ± .315	
60 ± .320	
61 ± .325	
62 ± .330	
63 ± .335	
64 ± .340	
65 ± .345	
66 ± .350	
67 ± .355	
68 ± .360	
69 ± .365	
70 ± .370	
71 ± .375	
72 ± .380	
73 ± .385	
74 ± .390	
75 ± .395	
76 ± .400	
77 ± .405	
78 ± .410	
79 ± .415	
80 ± .420	
81 ± .425	
82 ± .430	
83 ± .435	
84 ± .440	
85 ± .445	
86 ± .450	
87 ± .455	
88 ± .460	
89 ± .465	
90 ± .470	
91 ± .475	
92 ± .480	
93 ± .485	
94 ± .490	
95 ± .495	
96 ± .500	
97 ± .505	
98 ± .510	
99 ± .515	
100 ± .520	
101 ± .525	
102 ± .530	
103 ± .535	
104 ± .540	
105 ± .545	
106 ± .550	
107 ± .555	
108 ± .560	
109 ± .565	
110 ± .570	
111 ± .575	
112 ± .580	
113 ± .585	
114 ± .590	
115 ± .595	
116 ± .600	
117 ± .605	
118 ± .610	
119 ± .615	
120 ± .620	
121 ± .625	
122 ± .630	
123 ± .635	
124 ± .640	
125 ± .645	
126 ± .650	
127 ± .655	
128 ± .660	
129 ± .665	
130 ± .670	
131 ± .675	
132 ± .680	
133 ± .685	
134 ± .690	
135 ± .695	
136 ± .700	
137 ± .705	
138 ± .710	
139 ± .715	
140 ± .720	
141 ± .725	
142 ± .730	
143 ± .735	
144 ± .740	
145 ± .745	
146 ± .750	
147 ± .755	
148 ± .760	
149 ± .765	
150 ± .770	
151 ± .775	
152 ± .780	
153 ± .785	
154 ± .790	
155 ± .795	
156 ± .800	
157 ± .805	
158 ± .810	
159 ± .815	
160 ± .820	
161 ± .825	
162 ± .830	
163 ± .835	
164 ± .840	
165 ± .845	
166 ± .850	
167 ± .855	
168 ± .860	
169 ± .865	
170 ± .870	
171 ± .875	
172 ± .880	
173 ± .885	
174 ± .890	
175 ± .895	
176 ± .900	
177 ± .905	
178 ± .910	
179 ± .915	
180 ± .920	
181 ± .925	
182 ± .930	
183 ± .935	
184 ± .940	
185 ± .945	
186 ± .950	
187 ± .955	
188 ± .960	
189 ± .965	
190 ± .970	
191 ± .975	
192 ± .980	
193 ± .985	
194 ± .990	
195 ± .995	
196 ± 1.000	
197 ± 1.005	
198 ± 1.010	
199 ± 1.015	
200 ± 1.020	
201 ± 1.025	
202 ± 1.030	
203 ± 1.035	
204 ± 1.040	
205 ± 1.045	
206 ± 1.050	
207 ± 1.055	
208 ± 1.060	
209 ± 1.065	
210 ± 1.070	
211 ± 1.075	
212 ± 1.080	
213 ± 1.085	
214 ± 1.090	
215 ± 1.095	
216 ± 1.100	
217 ± 1.105	
218 ± 1.110	
219 ± 1.115	
220 ± 1.120	
221 ± 1.125	
222 ± 1.130	
223 ± 1.135	
224 ± 1.140	
225 ± 1.145	
226 ± 1.150	
227 ± 1.155	
228 ± 1.160	
229 ± 1.165	
230 ± 1.170	
231 ± 1.175	
232 ± 1.180	
233 ± 1.185	
234 ± 1.190	
235 ± 1.195	
236 ± 1.200	
237 ± 1.205	
238 ± 1.210	
239 ± 1.215	
240 ± 1.220	
241 ± 1.225	
242 ± 1.230	
243 ± 1.235	
244 ± 1.240	
245 ± 1.245	
246 ± 1.250	
247 ± 1.255	
248 ± 1.260	
249 ± 1.265	
250 ± 1.270	
251 ± 1.275	
252 ± 1.280	
253 ± 1.285	
254 ± 1.290	
255 ± 1.295	
256 ± 1.300	
257 ± 1.305	
258 ± 1.310	
259 ± 1.315	
260 ± 1.320	
261 ± 1.325	
262 ± 1.330	
263 ± 1.335	
264 ± 1.340	
265 ± 1.345	
266 ± 1.350	
267 ± 1.355	
268 ± 1.360	
269 ± 1.365	
270 ± 1.370	
271 ± 1.375	
272 ± 1.380	
273 ± 1.385	
274 ± 1.390	
275 ± 1.395	
276 ± 1.400	
277 ± 1.405	
278 ± 1.410	
279 ± 1.415	
280 ± 1.420	
281 ± 1.425	
282 ± 1.430	
283 ± 1.435	
284 ± 1.440	
285 ± 1.445	
286 ± 1.450	
287 ± 1.455	
288 ± 1.460	
289 ± 1.465	
290 ± 1.470	
291 ± 1.475	
292 ± 1.480	
293 ± 1.485	
294 ± 1.490	
295 ± 1.495	
296 ± 1.500	
297 ± 1.505	
298 ± 1.510	
299 ± 1.515	
300 ± 1.520	
301 ± 1.525	
302 ± 1.530	
303	



USE PLASTIC NUT, RUBBER GASKET,
AND STAR WASHERS PROVIDED WITH SWITCH

SCALE 1/2

Fabricated & Documented
to be RoHS Compliant

ITEM	QTY	PART NO.	DESCRIPTION
1	1	3-004150	CABLE, PALM SWITCH AB 800
2	1	3-003322	BRACKET, PALM SWITCH, F22V
3	2	2-002170-M6	T-NUT, 3030 SERIES, M6x1.0
4	1	2-002108	GUARD, YELLOW PLASTIC
5	1	2-002107	SWITCH, PALM, 24VDC INPUT, PNP OUTPUT
6	2	1-11461F-014M	SCREW, BUTTON HEAD, SOCKET, M6X1.0 X 14MM LG, SS

AB8-UM
Rev. A

C	GHM	5-30/18	1511	ADDED MISSING WASHER TO 2-002107
B	LDC	03-03-16	255	3-004150 WAS 2-002110
A	JAS	10-29-15	216	NEW DRAWING
REV	BY	DATE	ECN	DESCRIPTION

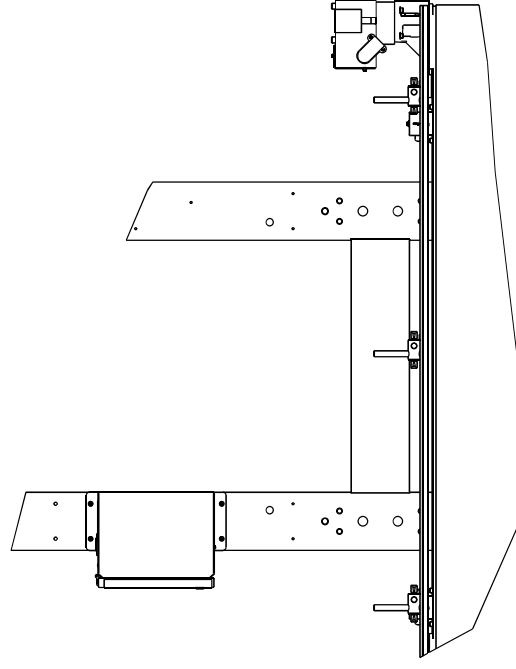
**Automated**
PACKAGING SYSTEMS
10175 PHILIPP PARKWAY • STREETSBORO, OH 44241

DRAWING SIZE	SCALE	DRAWN BY	NAME: JAS	DATE: 10-29-15	BOM REFERENCE NUMBER
B	1/2				
TITLE ASSY, PALM SWITCH, AB800					DRAWING NO. 3-003669
REV					SHEET 1 OF 1
					C

				ATION STREET ITTEN	
--	--	--	--	--------------------------	--

NOTES:

- 1) PLACE ENCLOSURE KEY IN SHIP KIT BAG
- 2) 2-002369 IS THE PART NUMBER OF A SPARE ENCLOSURE KEY. THE LATCH AND KEY COME AS A SET AND THE KEY CAN NOT BE ORDERED SEPARATELY.
- 3) 2-002131 IS THE SPARE PART NUMBER FOR THE HIGH ADHESION BELT, SUPPLIED WITH 2-002124 AND NOT PART OF THIS ASSEMBLY.



(41.5)

MATERIAL	SEE BOM	MACHINE SURFACES TO BE NO GREATER THAN 125 (12.5) ✓ UNLESS OTHERWISE NOTED PART MUST BE FREE OF BURRS AND SHARP EDGES	DIM	
			INCHES	MILL
		TOLERANCE	1 PLACE DIM	± .01
		2 PLACE DIM	± .005	
		3 PLACE DIM	± .001	
		4 PLACE DIM	± .0005	
		5 PLACE DIM	± .0001	
		6 PLACE DIM	± .00005	

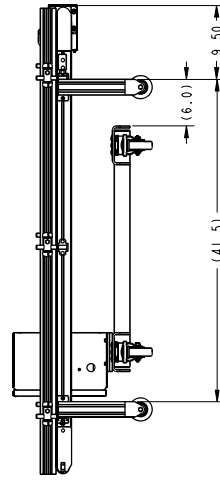
NOTE: THIS DOCUMENT CONTAINS PROPRIETARY INFORMATION AND IS NOT TO BE DISCLOSED TO ANY OTHER PERSON OR ORGANIZATION, IN WHOLE OR PART, WITHOUT THE PRIOR WRITTEN CONSENT OF AUTOMETRIC IMAGING SYSTEMS, INC.

DRAWING SIZE	SCALE	DRAWN BY		SOW REFERENCE NUMBER
		NAME:	GHW	
D	3/16	DATE:	2-27-20	
TITLE				REVISION NO.

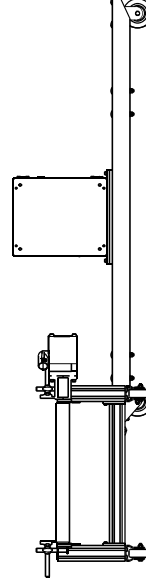
Automated
PACKAGING SYSTEMS
10075 PHILIPP PARKWAY • STREETSBORO, OH 44241

NOTES:

- 1) PLACE ENCLOSURE KEY IN SHIP KIT BAG
2) 2-002369 IS THE PART NUMBER OF A SPARE ENCLOSURE KEY. THE LATCH AND KEY COME AS A SET AND THE KEY CAN NOT BE ORDERED SEPERATELY.
3) 2-002131 IS THE SPARE PART NUMBER FOR THE HIGH ADHESION BELT, SUPPLIED WITH 2-002124 AND NOT PART OF THIS ASSEMBLY



SCALE 1/8

[illegible]

**Fabricated & Documented
to be RoHS Compliant**

NOTE: 3-009198 MOUNTS INSIDE OF E-BOX 3-009089-110
THIS COVER IS ADDED AFTER E-BOX IS MOUNTED
TO CONVEYOR



ITEM QTY PART NO. DESCRIPTION

1 1 3-009277 PLATE, ADAPTER- E-BOX TO FRAME

2 1 3-009276 PLATE, ADAPTER- FRAME TO E-BOX

3 1 3-009198 SHIELD, CONVEYOR E-BOX INTERNAL

4 1 3-009179 ASS'Y, CONVEYOR MOTOR SHIELD - AB8

5 1 3-009089-110 ASSY, ELE. ENCL., SINGLE CONV., 100-120VAC, 50/60HZ

6 1 3-003901 TAPE, HAZARD, 2" X 9"

7 1 3-003900 TAPE, HAZARD, 2" X 9"

8 1 3-003899 TAPE, HAZARD, 1" X 9.25"

9 1 2-003489-003 MOUNT, SIDE DRIVE AS40 - LOCATION 3

10 1 2-003487 MOTOR, GEAR DC 30:1 120W

11 1 2-002384 COVER, PLATE CONVEYOR AS40 DRIVE SHAFT, RH

12 1 2-002366 CONVEYOR, 18"W X 60" LG AS40 SERIES, LH

13 2 2-002132 STAND, INFEED SUPPORT AL 9"-16"H X 18" WIDE W/CASTERS

14 1 2-002127 GUIDES, ADJUSTABLE 2"H X 60" LG CONVEYOR

15 2 1-11659F-020M SCREW, FLAT HEAD, SOCKET, M5X0.8 X 20MM LG, SS

16 4 1-11161F-020M SCREW, CAP, SOCKET HEAD, M6X1.0 X 20MM LG, SS

17 1 3-009198 SHIELD, CONVEYOR E-BOX INTERNAL

18 1 3-009179 ASS'Y, CONVEYOR MOTOR SHIELD - AB8

19 1 3-009089-110 ASSY, ELE. ENCL., SINGLE CONV., 100-120VAC, 50/60HZ

20 1 3-003901 TAPE, HAZARD, 2" X 9"

21 1 3-003900 TAPE, HAZARD, 2" X 9"

22 1 3-003899 TAPE, HAZARD, 1" X 9.25"

23 1 2-003489-003 MOUNT, SIDE DRIVE AS40 - LOCATION 3

24 1 2-003487 MOTOR, GEAR DC 30:1 120W

25 1 2-002384 COVER, PLATE CONVEYOR AS40 DRIVE SHAFT, RH

26 1 2-002366 CONVEYOR, 18"W X 60" LG AS40 SERIES, LH

27 2 2-002132 STAND, INFEED SUPPORT AL 9"-16"H X 18" WIDE W/CASTERS

28 1 2-002127 GUIDES, ADJUSTABLE 2"H X 60" LG CONVEYOR

29 2 1-11659F-020M SCREW, FLAT HEAD, SOCKET, M5X0.8 X 20MM LG, SS

30 4 1-11161F-020M SCREW, CAP, SOCKET HEAD, M6X1.0 X 20MM LG, SS

31 1 3-009198 SHIELD, CONVEYOR E-BOX INTERNAL

32 1 3-009179 ASS'Y, CONVEYOR MOTOR SHIELD - AB8

33 1 3-009089-110 ASSY, ELE. ENCL., SINGLE CONV., 100-120VAC, 50/60HZ

34 1 3-003901 TAPE, HAZARD, 2" X 9"

35 1 3-003900 TAPE, HAZARD, 2" X 9"

36 1 3-003899 TAPE, HAZARD, 1" X 9.25"

37 1 2-003489-003 MOUNT, SIDE DRIVE AS40 - LOCATION 3

38 1 2-003487 MOTOR, GEAR DC 30:1 120W

39 1 2-002384 COVER, PLATE CONVEYOR AS40 DRIVE SHAFT, RH

40 1 2-002366 CONVEYOR, 18"W X 60" LG AS40 SERIES, LH

41 2 2-002132 STAND, INFEED SUPPORT AL 9"-16"H X 18" WIDE W/CASTERS

42 1 2-002127 GUIDES, ADJUSTABLE 2"H X 60" LG CONVEYOR

43 2 1-11659F-020M SCREW, FLAT HEAD, SOCKET, M5X0.8 X 20MM LG, SS

44 4 1-11161F-020M SCREW, CAP, SOCKET HEAD, M6X1.0 X 20MM LG, SS

45 1 3-009198 SHIELD, CONVEYOR E-BOX INTERNAL

46 1 3-009179 ASS'Y, CONVEYOR MOTOR SHIELD - AB8

47 1 3-009089-110 ASSY, ELE. ENCL., SINGLE CONV., 100-120VAC, 50/60HZ

48 1 3-003901 TAPE, HAZARD, 2" X 9"

49 1 3-003900 TAPE, HAZARD, 2" X 9"

50 1 3-003899 TAPE, HAZARD, 1" X 9.25"

51 1 2-003489-003 MOUNT, SIDE DRIVE AS40 - LOCATION 3

52 1 2-003487 MOTOR, GEAR DC 30:1 120W

53 1 2-002384 COVER, PLATE CONVEYOR AS40 DRIVE SHAFT, RH

54 1 2-002366 CONVEYOR, 18"W X 60" LG AS40 SERIES, LH

55 2 2-002132 STAND, INFEED SUPPORT AL 9"-16"H X 18" WIDE W/CASTERS

56 1 2-002127 GUIDES, ADJUSTABLE 2"H X 60" LG CONVEYOR

57 2 1-11659F-020M SCREW, FLAT HEAD, SOCKET, M5X0.8 X 20MM LG, SS

58 4 1-11161F-020M SCREW, CAP, SOCKET HEAD, M6X1.0 X 20MM LG, SS

59 1 3-009198 SHIELD, CONVEYOR E-BOX INTERNAL

60 1 3-009179 ASS'Y, CONVEYOR MOTOR SHIELD - AB8

61 1 3-009089-110 ASSY, ELE. ENCL., SINGLE CONV., 100-120VAC, 50/60HZ

62 1 3-003901 TAPE, HAZARD, 2" X 9"

63 1 3-003900 TAPE, HAZARD, 2" X 9"

64 1 3-003899 TAPE, HAZARD, 1" X 9.25"

65 1 2-003489-003 MOUNT, SIDE DRIVE AS40 - LOCATION 3

66 1 2-003487 MOTOR, GEAR DC 30:1 120W

67 1 2-002384 COVER, PLATE CONVEYOR AS40 DRIVE SHAFT, RH

68 1 2-002366 CONVEYOR, 18"W X 60" LG AS40 SERIES, LH

69 2 2-002132 STAND, INFEED SUPPORT AL 9"-16"H X 18" WIDE W/CASTERS

70 1 2-002127 GUIDES, ADJUSTABLE 2"H X 60" LG CONVEYOR

71 2 1-11659F-020M SCREW, FLAT HEAD, SOCKET, M5X0.8 X 20MM LG, SS

72 4 1-11161F-020M SCREW, CAP, SOCKET HEAD, M6X1.0 X 20MM LG, SS

73 1 3-009198 SHIELD, CONVEYOR E-BOX INTERNAL

74 1 3-009179 ASS'Y, CONVEYOR MOTOR SHIELD - AB8

75 1 3-009089-110 ASSY, ELE. ENCL., SINGLE CONV., 100-120VAC, 50/60HZ

76 1 3-003901 TAPE, HAZARD, 2" X 9"

77 1 3-003900 TAPE, HAZARD, 2" X 9"

78 1 3-003899 TAPE, HAZARD, 1" X 9.25"

79 1 2-003489-003 MOUNT, SIDE DRIVE AS40 - LOCATION 3

80 1 2-003487 MOTOR, GEAR DC 30:1 120W

81 1 2-002384 COVER, PLATE CONVEYOR AS40 DRIVE SHAFT, RH

82 1 2-002366 CONVEYOR, 18"W X 60" LG AS40 SERIES, LH

83 2 2-002132 STAND, INFEED SUPPORT AL 9"-16"H X 18" WIDE W/CASTERS

84 1 2-002127 GUIDES, ADJUSTABLE 2"H X 60" LG CONVEYOR

85 2 1-11659F-020M SCREW, FLAT HEAD, SOCKET, M5X0.8 X 20MM LG, SS

86 4 1-11161F-020M SCREW, CAP, SOCKET HEAD, M6X1.0 X 20MM LG, SS

87 1 3-009198 SHIELD, CONVEYOR E-BOX INTERNAL

88 1 3-009179 ASS'Y, CONVEYOR MOTOR SHIELD - AB8

89 1 3-009089-110 ASSY, ELE. ENCL., SINGLE CONV., 100-120VAC, 50/60HZ

90 1 3-003901 TAPE, HAZARD, 2" X 9"

91 1 3-003900 TAPE, HAZARD, 2" X 9"

92 1 3-003899 TAPE, HAZARD, 1" X 9.25"

93 1 2-003489-003 MOUNT, SIDE DRIVE AS40 - LOCATION 3

94 1 2-003487 MOTOR, GEAR DC 30:1 120W

95 1 2-002384 COVER, PLATE CONVEYOR AS40 DRIVE SHAFT, RH

96 1 2-002366 CONVEYOR, 18"W X 60" LG AS40 SERIES, LH

97 2 2-002132 STAND, INFEED SUPPORT AL 9"-16"H X 18" WIDE W/CASTERS

98 1 2-002127 GUIDES, ADJUSTABLE 2"H X 60" LG CONVEYOR

99 2 1-11659F-020M SCREW, FLAT HEAD, SOCKET, M5X0.8 X 20MM LG, SS

100 4 1-11161F-020M SCREW, CAP, SOCKET HEAD, M6X1.0 X 20MM LG, SS

101 1 3-009198 SHIELD, CONVEYOR E-BOX INTERNAL

102 1 3-009179 ASS'Y, CONVEYOR MOTOR SHIELD - AB8

103 1 3-009089-110 ASSY, ELE. ENCL., SINGLE CONV., 100-120VAC, 50/60HZ

104 1 3-003901 TAPE, HAZARD, 2" X 9"

105 1 3-003900 TAPE, HAZARD, 2" X 9"

106 1 3-003899 TAPE, HAZARD, 1" X 9.25"

107 1 2-003489-003 MOUNT, SIDE DRIVE AS40 - LOCATION 3

108 1 2-003487 MOTOR, GEAR DC 30:1 120W

109 1 2-002384 COVER, PLATE CONVEYOR AS40 DRIVE SHAFT, RH

110 1 2-002366 CONVEYOR, 18"W X 60" LG AS40 SERIES, LH

111 2 2-002132 STAND, INFEED SUPPORT AL 9"-16"H X 18" WIDE W/CASTERS

112 1 2-002127 GUIDES, ADJUSTABLE 2"H X 60" LG CONVEYOR

113 2 1-11659F-020M SCREW, FLAT HEAD, SOCKET, M5X0.8 X 20MM LG, SS

114 4 1-11161F-020M SCREW, CAP, SOCKET HEAD, M6X1.0 X 20MM LG, SS

115 1 3-009198 SHIELD, CONVEYOR E-BOX INTERNAL

116 1 3-009179 ASS'Y, CONVEYOR MOTOR SHIELD - AB8

117 1 3-009089-110 ASSY, ELE. ENCL., SINGLE CONV., 100-120VAC, 50/60HZ

118 1 3-003901 TAPE, HAZARD, 2" X 9"

119 1 3-003900 TAPE, HAZARD, 2" X 9"

120 1 3-003899 TAPE, HAZARD, 1" X 9.25"

121 1 2-003489-003 MOUNT, SIDE DRIVE AS40 - LOCATION 3

122 1 2-003487 MOTOR, GEAR DC 30:1 120W

123 1 2-002384 COVER, PLATE CONVEYOR AS40 DRIVE SHAFT, RH

124 1 2-002366 CONVEYOR, 18"W X 60" LG AS40 SERIES, LH

125 2 2-002132 STAND, INFEED SUPPORT AL 9"-16"H X 18" WIDE W/CASTERS

126 1 2-002127 GUIDES, ADJUSTABLE 2"H X 60" LG CONVEYOR

127 2 1-11659F-020M SCREW, FLAT HEAD, SOCKET, M5X0.8 X 20MM LG, SS

128 4 1-11161F-020M SCREW, CAP, SOCKET HEAD, M6X1.0 X 20MM LG, SS

129 1 3-009198 SHIELD, CONVEYOR E-BOX INTERNAL

130 1 3-009179 ASS'Y, CONVEYOR MOTOR SHIELD - AB8

131 1 3-009089-110 ASSY, ELE. ENCL., SINGLE CONV., 100-120VAC, 50/60HZ

132 1 3-003901 TAPE, HAZARD, 2" X 9"

133 1 3-003900 TAPE, HAZARD, 2" X 9"

134 1 3-003899 TAPE, HAZARD, 1" X 9.25"

135 1 2-003489-003 MOUNT, SIDE DRIVE AS40 - LOCATION 3

136 1 2-003487 MOTOR, GEAR DC 30:1 120W

137 1 2-002384 COVER, PLATE CONVEYOR AS40 DRIVE SHAFT, RH

138 1 2-002366 CONVEYOR, 18"W X 60" LG AS40 SERIES, LH

139 2 2-002132 STAND, INFEED SUPPORT AL 9"-16"H X 18" WIDE W/CASTERS

140 1 2-002127 GUIDES, ADJUSTABLE 2"H X 60" LG CONVEYOR

141 2 1-11659F-020M SCREW, FLAT HEAD, SOCKET, M5X0.8 X 20MM LG, SS

142 4 1-11161F-020M SCREW, CAP, SOCKET HEAD, M6X1.0 X 20MM LG, SS

143 1 3-009198 SHIELD, CONVEYOR E-BOX INTERNAL

144 1 3-009179 ASS'Y, CONVEYOR MOTOR SHIELD - AB8

145 1 3-009089-110 ASSY, ELE. ENCL., SINGLE CONV., 100-120VAC, 50/60HZ

146 1 3-003901 TAPE, HAZARD, 2" X 9"

147 1 3-003900 TAPE, HAZARD, 2" X 9"

148 1 3-003899 TAPE, HAZARD, 1" X 9.25"

149 1 2-003489-003 MOUNT, SIDE DRIVE AS40 - LOCATION 3

150 1 2-003487 MOTOR, GEAR DC 30:1 120W

151 1 2-002384 COVER, PLATE CONVEYOR AS40 DRIVE SHAFT, RH

152 1 2-002366 CONVEYOR, 18"W X 60" LG AS40 SERIES, LH

153 2 2-002132 STAND, INFEED SUPPORT AL 9"-16"H X 18" WIDE W/CASTERS

154 1 2-002127 GUIDES, ADJUSTABLE 2"H X 60" LG CONVEYOR

155 2 1-11659F-020M SCREW, FLAT HEAD, SOCKET, M5X0.8 X 20MM LG, SS

156 4 1-11161F-020M SCREW, CAP, SOCKET HEAD, M6X1.0 X 20MM LG, SS

157 1 3-009198 SHIELD, CONVEYOR E-BOX INTERNAL

158 1 3-009179 ASS'Y, CONVEYOR MOTOR SHIELD - AB8

159 1 3-009089-110 ASSY, ELE. ENCL., SINGLE CONV., 100-120VAC, 50/60HZ

160 1 3-003901 TAPE, HAZARD, 2" X 9"

161 1 3-003900 TAPE, HAZARD, 2" X 9"

162 1 3-003899 TAPE, HAZARD, 1" X 9.25"

163 1 2-003489-003 MOUNT, SIDE DRIVE AS40 - LOCATION 3

164 1 2-003487 MOTOR, GEAR DC 30:1 120W

165 1 2-002384 COVER, PLATE CONVEYOR AS40 DRIVE SHAFT, RH

166 1 2-002366 CONVEYOR, 18"W X 60" LG AS40 SERIES, LH

167 2 2-002132 STAND, INFEED SUPPORT AL 9"-16"H X 18" WIDE W/CASTERS

168 1 2-002127 GUIDES, ADJUSTABLE 2"H X 60" LG CONVEYOR

169 2 1-11659F-020M SCREW, FLAT HEAD, SOCKET, M5X0.8 X 20MM LG, SS

170 4 1-11161F-020M SCREW, CAP, SOCKET HEAD, M6X1.0 X 20MM LG, SS

171 1 3-009198 SHIELD, CONVEYOR E-BOX INTERNAL

172 1 3-009179 ASS'Y, CONVEYOR MOTOR SHIELD - AB8

173 1 3-009089-110 ASSY, ELE. ENCL., SINGLE CONV., 100-120VAC, 50/60HZ

174 1 3-003901 TAPE, HAZARD, 2" X 9"

175 1 3-003900 TAPE, HAZARD, 2" X 9"

176 1 3-003899 TAPE, HAZARD, 1" X 9.25"

177 1 2-003489-003 MOUNT, SIDE DRIVE AS40 - LOCATION 3

178 1 2-003487 MOTOR, GEAR DC 30:1 120W

179 1 2-002384 COVER, PLATE CONVEYOR AS40 DRIVE SHAFT, RH

180 1 2-002366 CONVEYOR, 18"W X 60" LG AS40 SERIES, LH

181 2 2-002132 STAND, INFEED SUPPORT AL 9"-16"H X 18" WIDE W/CASTERS

182 1 2-002127 GUIDES, ADJUSTABLE 2"H X 60" LG CONVEYOR

183 2 1-11659F-020M SCREW, FLAT HEAD, SOCKET, M5X0.8 X 20MM LG, SS

184 4 1-11161F-020M SCREW, CAP, SOCKET HEAD, M6X1.0 X 20MM LG, SS

185 1 3-009198 SHIELD, CONVEYOR E-BOX INTERNAL

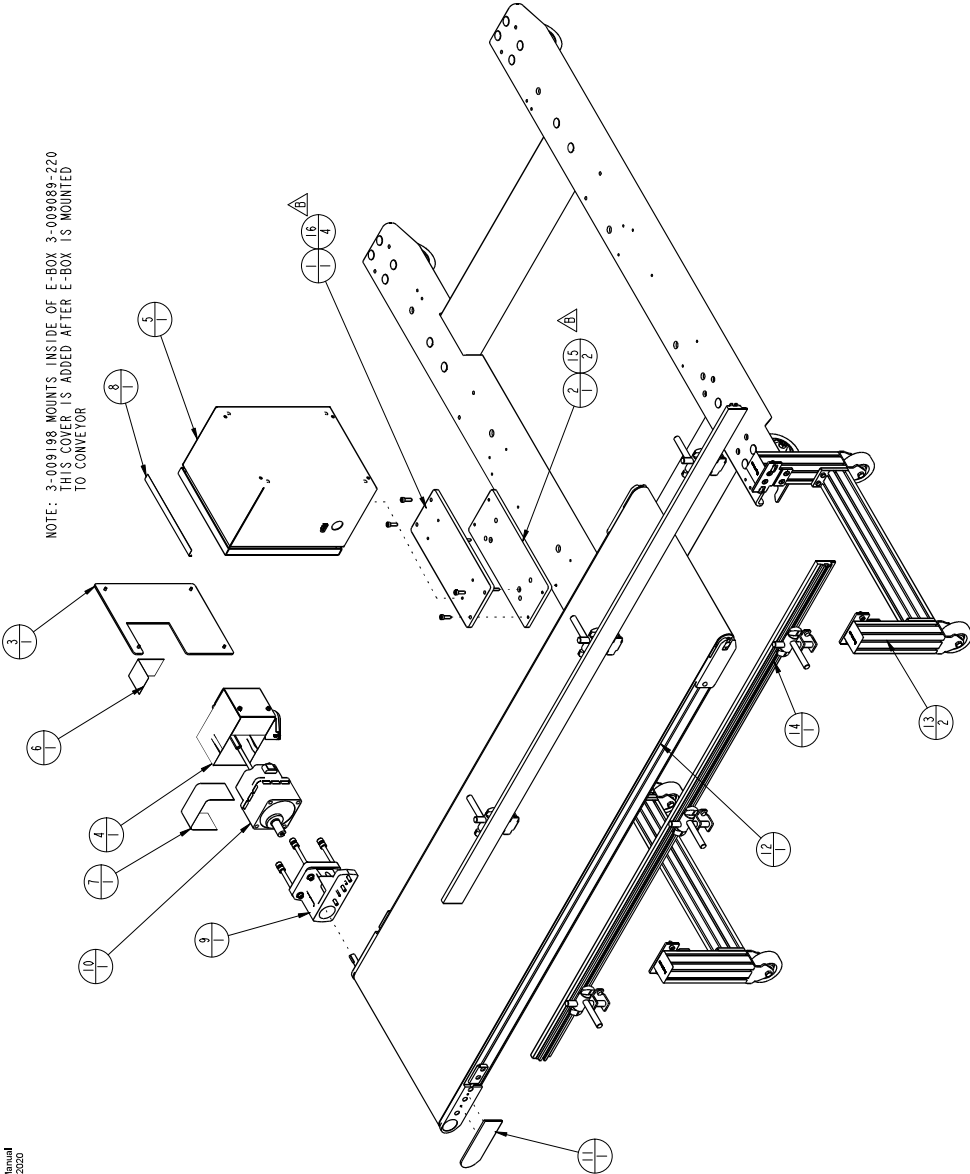
186 1 3-009179 ASS'Y, CONVEYOR MOTOR SHIELD - AB8

187 1 3-009089-110 ASSY, ELE. ENCL., SINGLE CONV., 100-120VAC, 50/60HZ

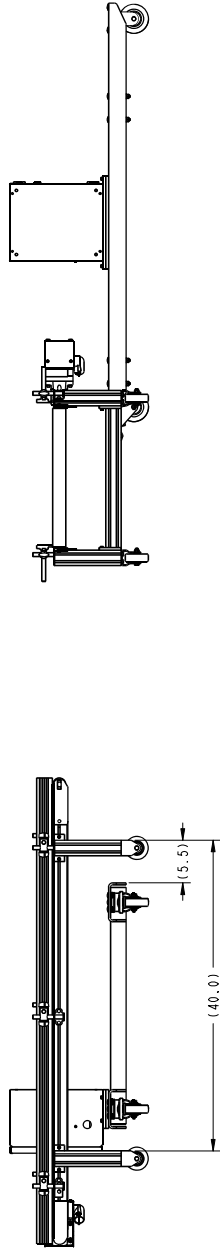
188 1 3-003901 TAPE, HAZARD, 2" X 9"

189 1 3-003900 TAPE, HAZARD, 2" X 9"

NOTE: 3-009198 MOUNTS INSIDE OF E-BOX 3-009089-220
THIS COVER IS ADDED AFTER E-BOX IS MOUNTED
TO CONVEYOR

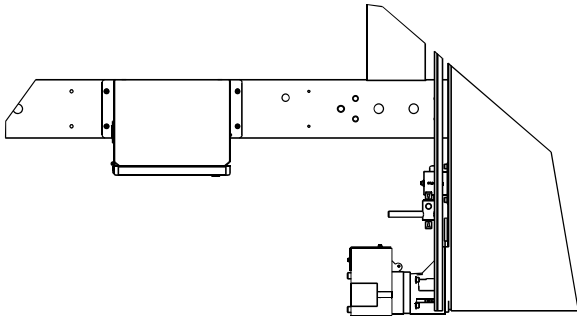


- NOTES:
- 1) PLACE ENCLOSURE KEY IN SHIP KIT BAG
 - 2) 2-002389 IS THE PART NUMBER OF A SPARE ENCLOSURE KEY. THE LATCH AND KEY COME AS A SET AND THE KEY CAN NOT BE ORDERED SEPARATELY.
 - 3) 2-002131 IS THE SPARE PART NUMBER FOR THE HIGH ADHESION BELT, SUPPLIED WITH 2-002124 AND NOT PART OF THIS ASSEMBLY.



SCALE 1/8

ITEM	QTY	PART NO.	DESCRIPTION
1	1	3-009277	PLATE, ADAPTER- E-BOX TO FRAME
2	1	3-009276	PLATE, ADAPTER- FRAME TO E-BOX
3	1	3-009198	SHIELD, CONVEYOR E-BOX - INTERNAL
4	1	3-009179	ASS'Y, CONVEYOR MOTOR SHIELD - AB8
5	1	3-009089-220	ASSY, ELE. ENCL., SINGLE CONV., 230 VAC, 50/60HZ
6	1	3-003901	TAPE, HAZARD, 2" X 5"
7	1	3-003900	TAPE, HAZARD, 2" X 9"
8	1	3-003899	TAPE, HAZARD, 1" X 9.25"
9	1	2-003489-003	MOUNT, SIDE DRIVE AS40 - LOCATION 3
10	1	2-003487	MOTOR, GEAR DC 30:1 120W
11	1	2-002384	COVER, PLATE CONVEYOR AS40 DRIVE SHAFT, RH
12	1	2-002366	CONVEYOR, 18"W X 60" LG AS40 SERIES, LH
13	2	2-002132	STAND, INFEED SUPPORT AL 9"-16"H X 18" WIDE W/CASTERS
14	1	2-002127	GUIDES, ADJUSTABLE 2"H X 60" LG CONVEYOR
15	2	1-11659F-020M	SCREW, FLAT HEAD, SOCKET, M5X0.8 X 20MM LG, SS
16	4	1-11161F-020M	SCREW, CAP, SOCKET HEAD, M6X1.0 X 20MM LG, SS



FINISH	NOTE
MATERIAL	SEE BOM
NOTES: 1. ALL DIMENSIONS ARE IN INCHES UNLESS OTHERWISE SPECIFIED. 2. ALL DIMENSIONS ARE TO CENTER UNLESS OTHERWISE SPECIFIED. 3. ALL DIMENSIONS ARE TO FACE UNLESS OTHERWISE SPECIFIED. 4. ALL DIMENSIONS ARE TO CENTER UNLESS OTHERWISE SPECIFIED. 5. ALL DIMENSIONS ARE TO FACE UNLESS OTHERWISE SPECIFIED.	
FINISH	NOTE
1	1
2	2
3	3
4	4
5	5
6	6
7	7
8	8
9	9
10	10
11	11
12	12
13	13
14	14
15	15
16	16



1075 PHILIP PARKWAY • BRIDGEVIEW, ON L4C 1A1

1075 PHILIP PARKWAY • BRIDGEVIEW, ON L4C 1A1

1075 PHILIP PARKWAY • BRIDGEVIEW, ON L4C 1A1

1075 PHILIP PARKWAY • BRIDGEVIEW, ON L4C 1A1

1075 PHILIP PARKWAY • BRIDGEVIEW, ON L4C 1A1

1075 PHILIP PARKWAY • BRIDGEVIEW, ON L4C 1A1

1075 PHILIP PARKWAY • BRIDGEVIEW, ON L4C 1A1

1075 PHILIP PARKWAY • BRIDGEVIEW, ON L4C 1A1

1075 PHILIP PARKWAY • BRIDGEVIEW, ON L4C 1A1

1075 PHILIP PARKWAY • BRIDGEVIEW, ON L4C 1A1

1075 PHILIP PARKWAY • BRIDGEVIEW, ON L4C 1A1

1075 PHILIP PARKWAY • BRIDGEVIEW, ON L4C 1A1

1075 PHILIP PARKWAY • BRIDGEVIEW, ON L4C 1A1

Tricited & Documented



ITEMS NOT SHOWN	
PART NO.	DESCRIPTION
-003876-011	ASSY, STRAP PRINTER PLATE TO PRINT HEAD
3-004871	KIT, TUBE ROUTING, ONESTEP PRINTER

KJD	08-13-19	2671
DME	04-10-19	(88)
	03-01-19	7390
MOS	03-14-18	1345
KJD	04-04-17	1024
OAR	11-10-16	819
OAR	01-11-16	795
MOS	7-15-16	418

DATE	1-19-16	424	RELEASED	DESCRIPTION
BY	DATE	ECN		



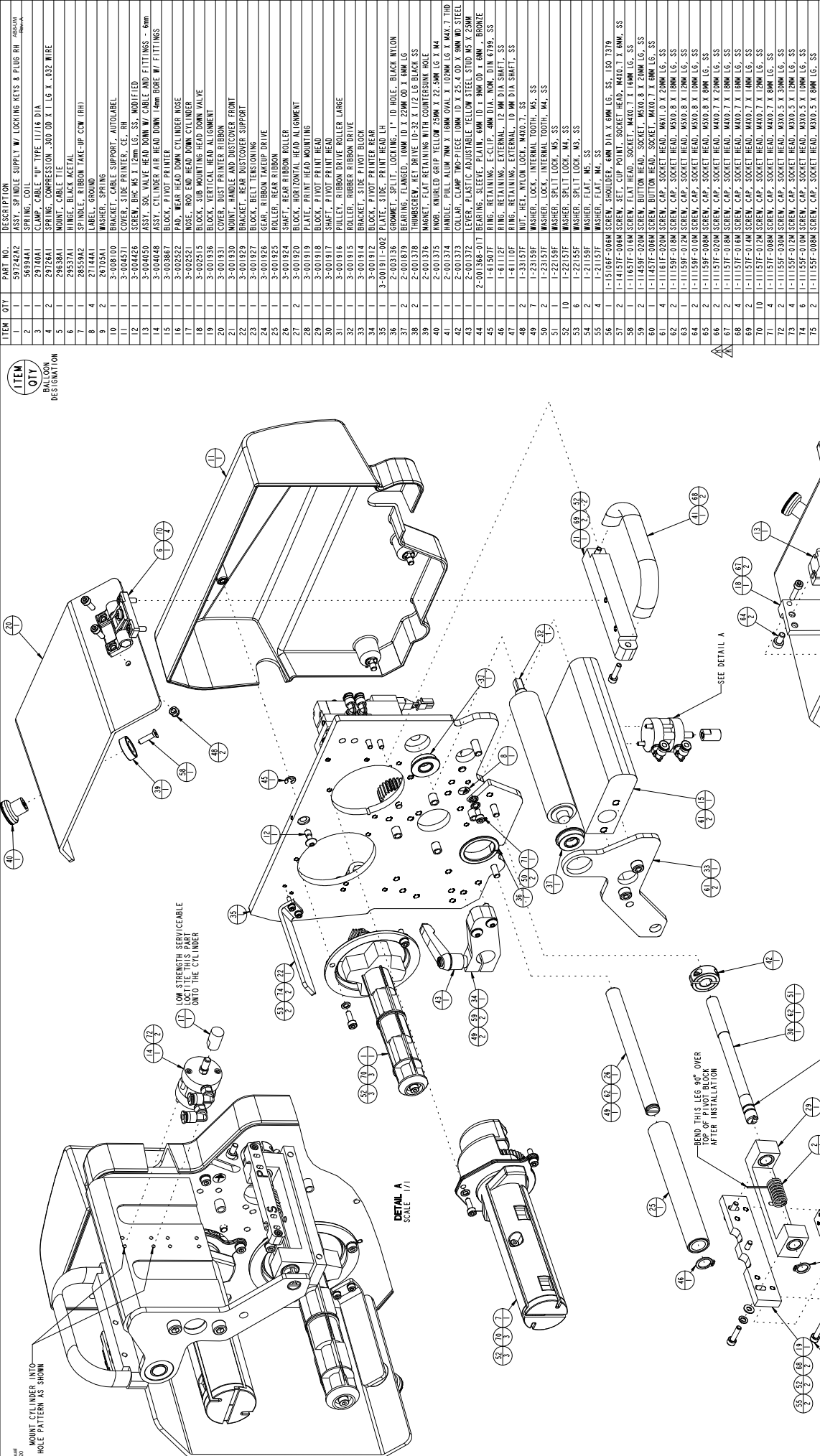
Automated PACKAGING SYSTEMS

10175 PHILLIP PARKWAY STREET/LOGO, ON 44241

ROW SIZE	SCALE	BOARD BY	ROW REFERENCE NUMBER
1/8"	7/8	1/8" x 1/8"	-
DATE	1/19/16		

ASSY. PRINTER

ISSUED NO. SHEET 1 OF 2

[illegible]

ASSEMBLY RETAINING RING
IN THIS GROOVE (2ND FROM END)

FOR GROUND

ITEMS NOT SHOWN

QTY	PART NO.	DESCRIPTION
1	3-003816-011	ASST. STRAP PRINTED PLATE TO PRINT HEAD
1	3-004487	R17, TUBE ROUTING, ONESTEP PRINTER

DPI KITS (REF.)	
PART NO.	DESCRIPTION
3-002400-203	KIT, 203 DPI, AB H-CLASS PRINTER
3-002400-300	KIT, 300 DPI, AB H-CLASS PRINTER

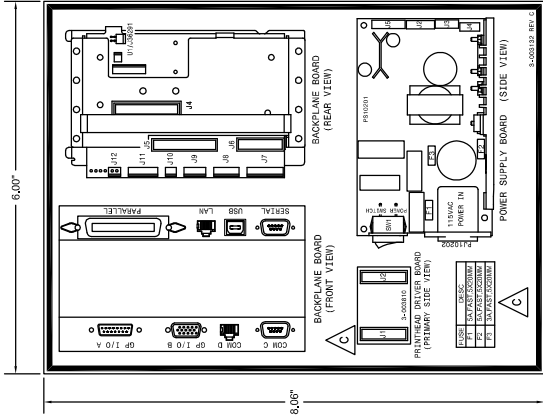
SPECIFICATIONS	
1	MAX TORQUE (N-LEFT)
2	MAX TORQUE (N-LEFT)
3	MAX TORQUE (N-LEFT)
4	MAX TORQUE (N-LEFT)
5	MAX TORQUE (N-LEFT)
6	MAX TORQUE (N-LEFT)
7	MAX TORQUE (N-LEFT)
8	MAX TORQUE (N-LEFT)
9	MAX TORQUE (N-LEFT)
10	MAX TORQUE (N-LEFT)
11	MAX TORQUE (N-LEFT)
12	MAX TORQUE (N-LEFT)
13	MAX TORQUE (N-LEFT)
14	MAX TORQUE (N-LEFT)
15	MAX TORQUE (N-LEFT)
16	MAX TORQUE (N-LEFT)
17	MAX TORQUE (N-LEFT)
18	MAX TORQUE (N-LEFT)
19	MAX TORQUE (N-LEFT)
20	MAX TORQUE (N-LEFT)
21	MAX TORQUE (N-LEFT)
22	MAX TORQUE (N-LEFT)
23	MAX TORQUE (N-LEFT)
24	MAX TORQUE (N-LEFT)
25	MAX TORQUE (N-LEFT)
26	MAX TORQUE (N-LEFT)
27	MAX TORQUE (N-LEFT)
28	MAX TORQUE (N-LEFT)
29	MAX TORQUE (N-LEFT)
30	MAX TORQUE (N-LEFT)
31	MAX TORQUE (N-LEFT)
32	MAX TORQUE (N-LEFT)
33	MAX TORQUE (N-LEFT)
34	MAX TORQUE (N-LEFT)
35	MAX TORQUE (N-LEFT)
36	MAX TORQUE (N-LEFT)
37	MAX TORQUE (N-LEFT)
38	MAX TORQUE (N-LEFT)
39	MAX TORQUE (N-LEFT)
40	MAX TORQUE (N-LEFT)
41	MAX TORQUE (N-LEFT)
42	MAX TORQUE (N-LEFT)
43	MAX TORQUE (N-LEFT)
44	MAX TORQUE (N-LEFT)
45	MAX TORQUE (N-LEFT)
46	MAX TORQUE (N-LEFT)
47	MAX TORQUE (N-LEFT)
48	MAX TORQUE (N-LEFT)
49	MAX TORQUE (N-LEFT)
50	MAX TORQUE (N-LEFT)
51	MAX TORQUE (N-LEFT)
52	MAX TORQUE (N-LEFT)
53	MAX TORQUE (N-LEFT)
54	MAX TORQUE (N-LEFT)
55	MAX TORQUE (N-LEFT)
56	MAX TORQUE (N-LEFT)
57	MAX TORQUE (N-LEFT)
58	MAX TORQUE (N-LEFT)
59	MAX TORQUE (N-LEFT)
60	MAX TORQUE (N-LEFT)
61	MAX TORQUE (N-LEFT)
62	MAX TORQUE (N-LEFT)
63	MAX TORQUE (N-LEFT)
64	MAX TORQUE (N-LEFT)
65	MAX TORQUE (N-LEFT)
66	MAX TORQUE (N-LEFT)
67	MAX TORQUE (N-LEFT)
68	MAX TORQUE (N-LEFT)
69	MAX TORQUE (N-LEFT)
70	MAX TORQUE (N-LEFT)
71	MAX TORQUE (N-LEFT)
72	MAX TORQUE (N-LEFT)
73	MAX TORQUE (N-LEFT)
74	MAX TORQUE (N-LEFT)
75	MAX TORQUE (N-LEFT)
76	MAX TORQUE (N-LEFT)
77	MAX TORQUE (N-LEFT)
78	MAX TORQUE (N-LEFT)
79	MAX TORQUE (N-LEFT)
80	MAX TORQUE (N-LEFT)
81	MAX TORQUE (N-LEFT)
82	MAX TORQUE (N-LEFT)
83	MAX TORQUE (N-LEFT)
84	MAX TORQUE (N-LEFT)
85	MAX TORQUE (N-LEFT)
86	MAX TORQUE (N-LEFT)
87	MAX TORQUE (N-LEFT)
88	MAX TORQUE (N-LEFT)
89	MAX TORQUE (N-LEFT)
90	MAX TORQUE (N-LEFT)
91	MAX TORQUE (N-LEFT)
92	MAX TORQUE (N-LEFT)
93	MAX TORQUE (N-LEFT)
94	MAX TORQUE (N-LEFT)
95	MAX TORQUE (N-LEFT)
96	MAX TORQUE (N-LEFT)
97	MAX TORQUE (N-LEFT)
98	MAX TORQUE (N-LEFT)
99	MAX TORQUE (N-LEFT)
100	MAX TORQUE (N-LEFT)

[illegible]

3-004010-002

**abricated & Documented
to be B&HS Compliant**

REV:	BY:	ECN:	DATE:	DESCRIPTION:
A	BB	4483	07/09/15	INITIAL RELEASE
B	BB	4483	09/01/15	ADDED DIMENSIONS
B	RLA	2483	09/01/15	REVISION CHANGED FROM A TO B ON DECAL CORNER.
C	JEB	6661	01/04/17	ADD FUSE TABLE & ADD IN DRIVER BOARD VIEW



- MATERIAL:
- .007" THICK MYLAR FILM
 - ADHESIVE 3M #300LSE BACK WITH EASY STRIP
 - BLACK CHARACTERS AND GRAPHICS ON WHITE BACKGROUND
 - OUTER BORDER IS 1/8" WIDE WITH 1/8" INSET

NOTES: SERVICES TO BE 100% PERFORMED WITHIN 10 BUSINESS DAYS OF ORDER DATE. DELIVERY DATE IS NOT A GUARANTEE. DELIVERY DATE IS BASED ON CURRENT STOCK. DELIVERY DATE IS SUBJECT TO CHANGE WITHOUT NOTICE. DELIVERY DATE IS BASED ON CURRENT STOCK. DELIVERY DATE IS SUBJECT TO CHANGE WITHOUT NOTICE. DELIVERY DATE IS BASED ON CURRENT STOCK. DELIVERY DATE IS SUBJECT TO CHANGE WITHOUT NOTICE.

Automated
PACKAGING SYSTEMS
10775 PHILIPP PARKWAY • STREETSBORO, OH 44224

DRWING BY:	DATE:	LIFECYCLE STATE:	SCALE:	SHEET:
B.BRAUER	07/10/15	Vaulted	NONE	1 OF 1
PRODUCT GROUP:	GRANTING NUMBER:	REV:	REV:	REV:
AB 550, 650, 850S	3-003132			C

TITLE: DECAL, DATAMAX PRINTER
ELECTRICAL ENCLOSURE

SCHEMATICS

Subject	Page
AB2-850S-PNE Rev C.....	9-3

To contact us via mail,
telephone or e-mail:

ADDRESS:

Automated Packaging Systems
10175 Philipp Parkway
Streetsboro, OH 44241

WORLD HEADQUARTERS:

Toll Free: 1 (800) 527-0733
Local: (330) 342-2000
Fax: (330) 342-2400

E-MAIL:

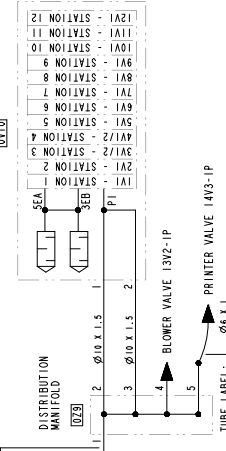
customerservice@autobag.com
info@autobag.com

WEBSITE:

www.autobag.com

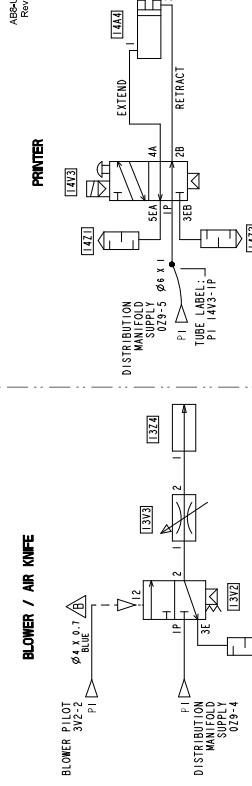
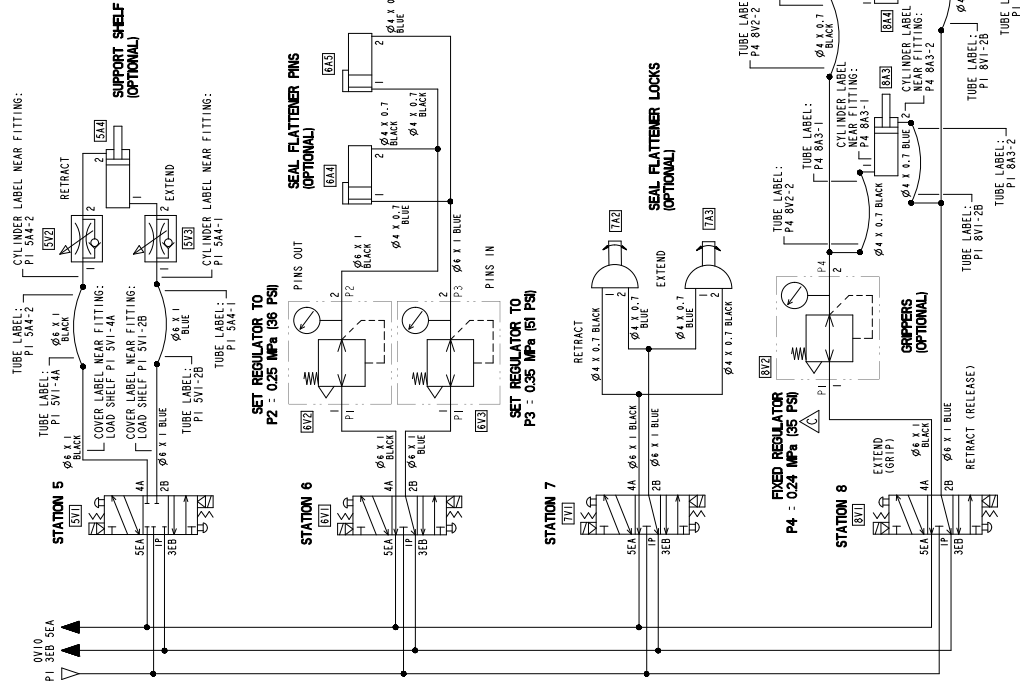
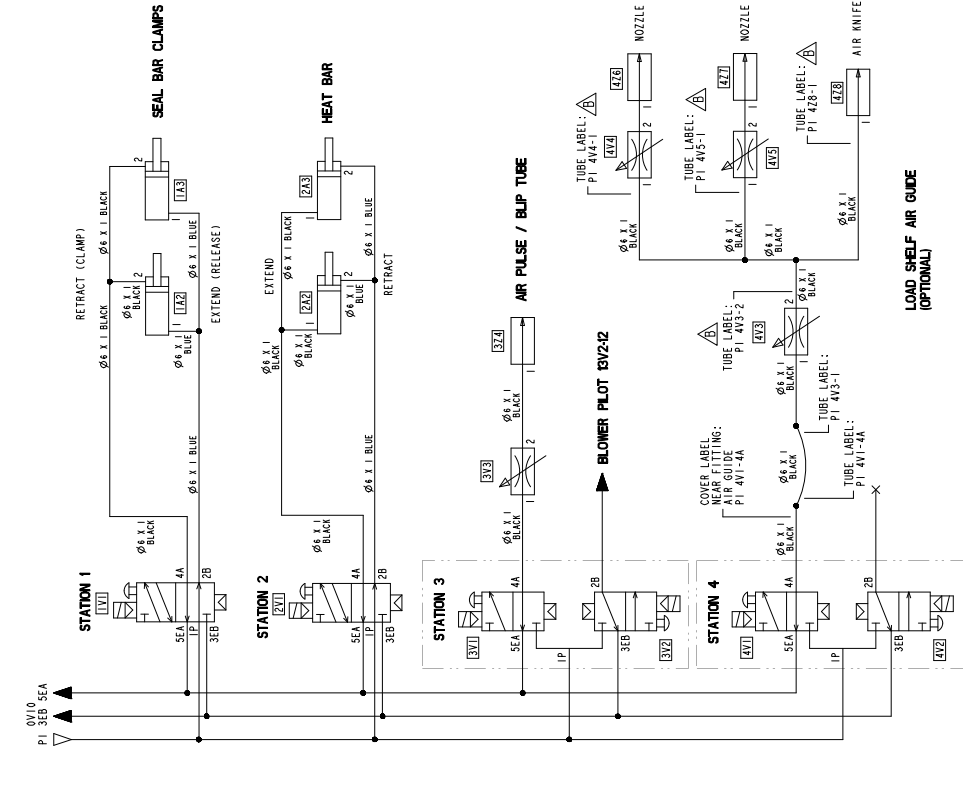


BLANK PAGE

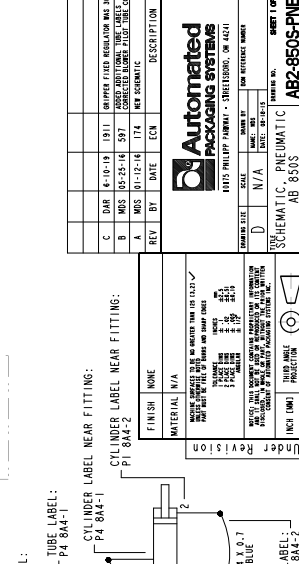
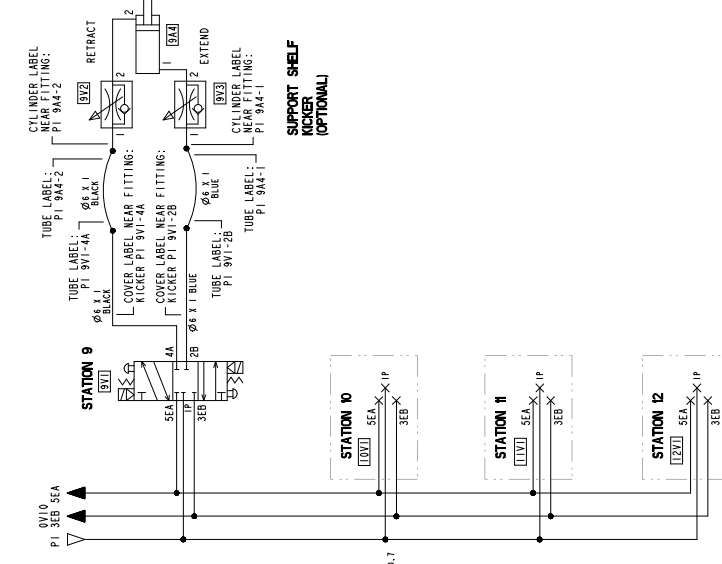
COVER LABEL
NEAR FITTING:

FLAW INES EVACOT WILDER WARDEN. X 10 V 1 E

FLOWLINES (EXCEPT WHERE MARKED): $\phi 4 \times 0.7$



FLOWLINES (EXCEPT WHERE MARKED): $\phi 4 \times 0.7$



BLANK PAGE

GLOSSARY

A

Accumulating Funnel. Optional bagger accessory which holds product during the bagger cycle and opens into the bag.

Adjustment. To fit or make exact.

Air Pressure. Pressure of atmospheric or compressed air.

AIR PULSE. Displays the amount of time (in seconds) the air pulse is activated to open each bag for loading.

Amp. Amperes.

AUTO. Automatic mode.

AutoTouch Control Screen. Main interface between the user and the bagger unit.

Aux. Auxiliary.

AUXILIARY OPTION. Optional equipment installed on the unit.

B

Bag. Receptacle to hold product.

Bag Deflator. Removes air before bag is sealed.

Bar. Metric Unit of pressure.

baud. Rate of communication speed.

Belt. Item that transmits power by friction contact between teeth.

Bolt. Item used to fasten or secure an assembly.

BPM. Bags Per Minute.

To contact us via mail,
telephone or e-mail:

ADDRESS:

Automated Packaging Systems
10175 Philipp Parkway
Streetsboro, OH 44241

WORLD HEADQUARTERS:

Toll Free: 1 (800) 527-0733
Local: (330) 342-2000
Fax: (330) 342-2400

E-MAIL:

customerservice@autobag.com
info@autobag.com

WEBSITE:

www.autobag.com



C

C. Centigrade.

CW. Clockwise.

CCW. Counter Clockwise.

Caster. Wheel free to swivel about an axis.

CFM. Cubic Feet per Minute.

cm. Centimeters.

cmm. Cubic Centimeters per Minute.

CMS. Cubic Meters per Second.

Cycle. Revolution of a certain period of time, which re-occurs in the same order

D

Dancer. Apparatus used to keep bags under consistent tension.

dB. Decibels.

Display. Digital screen that shows operating and set-up functions.

Drive Motor Belt. Belt by which machinery is driven by a motor.

E

E-Box. Electrical box.

Earth Ground. Protective device that grounds the unit to zero potential.

EBCB. E-BOX Connector Board

ESD. Electrostatic Discharge

ESDS. Electrostatic Discharge Sensitive

F

F. Fahrenheit. Temperature in degrees. The sum of 32 plus $\frac{9}{5}$ the temperature in degrees Celsius.

FAB. Flagship Auto Bagger

Fuse. Expandable device for opening an electric circuit when the current inside becomes excessive.

FRL. Filter Regulator Lubricator.

H

H. Height. Perpendicular distance between horizontal lines or planes passing through the top and bottom of an object.

Hz. Hertz.

Heat Range. Temperature of sealer bar to seal bags.

HMI. Human Machine Interface.

HWCB. Heat Wire Control Board

I

I/O. Input and output.

Imprinter. Printing unit that imprints from a printer ribbon onto a bag.

in. Inches.

K

kg. Kilograms.

L

L. Length or liters.

LED. Light Emitting Diode. Emits light when an electric current is applied.

lb. Pound.

LOTO. Lockout/Tagout

M

MAC. Media Access Control

MCB. Main Control Board.

Micron. One millionth of a meter.

Mil. A unit of measurement equaling a thousandth of an inch

mm. Millimeter.

N

Nip Roll. Rollers used to hold bags in place.

N-m. Newton meter.

O

OD. Outside diameter.

Ohms. Unit of electrical resistance.

P

P/N. Part number.

PACE RATE. Used to set the number of bags to be sealed per minute.

PCB. Printed Circuit Board.

PID. Proportional Integral Derivative loop also known as a feedback loop.

Polyethylene. A polymerized ethylene resin used to produce bags.

Power Cycle. Turning the power OFF then back ON to reset the machine.

Power Supply. Connects the main power source to the system.

Power Switch. Turns system On/Off.

Powered Unwind. Apparatus used to keep bags under consistent pressure.

psi. Pounds per square inch.

Pulse. A single burst of air.

R

RECALL. Used to store and recall information.

RESET. Used to display the type of Hold or RESET condition.

Rubber Drive Roll. Rollers used to move bags.

S

Scotch-Brite™. Trademark for abrasive products produced by 3M.

Seal Flatteners. Holds bag flush for sealing.

SEC. Seconds.

SEAL POINT. Used to set the distance between the opening of the bag and the bag seal.

SEAL TIME. Used to set the amount of time the pressure bar presses against sealer bar to seal the bag.

Sensor. A device that senses value or change.

Serial Port. Type of communication type used to connect computer to machine.

T

Teflon™. Trademark for polytetrafluoroethylene (PTFE), used as a coating to prevent sticking.

Threading Diagram. Diagram indicating how the bag web should be threaded through the unit and attached auxiliary equipment.

Trim Seal. Removes trim to make seal flush with top of bag.

U

UFCB. Upper Frame Control Board

V

V. Volts.

VAC. Volts Alternating Current.

VDC. Volts Direct Current.

VL Shelf. Equipment temporarily supports heavily loaded bags.

W

W. Width.

Web. Sheets of bags

BLANK PAGE